



Wilbraham Art League

“Perspectives” Newsletter

Spring 2008

The Wilbraham Art League is established by a group of committed artists for the purpose of developing active community interest and providing education in the field of fine arts. Membership is open to artists, patrons, businesses, and all other persons interested in and supportive of fine arts in the Hampden County area.

A Message from the President – Frank Tencza:

Congratulations everyone and Happy Birthday! The WAL has survived and thrived in its first year. In looking back a bit, we - certainly a diverse group – have met each other, made new friends, and have been busy doing those things we started out to do. We have raised the awareness of art in Wilbraham and nearby communities and have provided an outlet for the artistic works of our members.

Looking forward, we’ve begun 2008 with two exhibits already and are about to start our series of exhibits at Fountain Park in conjunction with the WNCC. Summerfest is upon us and then there’s the Summer Concert Series. We’ll be taking time off from meetings in July and August, but there will still be exhibit activities and opportunities to get together and paint with the Plein Air group.

As this year goes on, new things will pop up, we’ll have successes and failures and that’s OK because it shows we are alive and trying to do things. This will be the year in which we include the local high school and Academy students in our League and get their participation. We can teach them so much – from techniques to framing and exhibiting and just talking about art. If when I was a high school kid, I had been exposed to the experiences and knowledge we can impart, it would have changed my life.

Maybe we will have some new and different exhibits to add to the Small Works – Big Art and Duets shows. Some have mentioned exhibits with themes – a show might feature flowers or landscapes or still lifes or whatever. The possibilities are endless.

For us as we go into the future, it’s important to be supportive of each other, to help each other out, and to care enough about art and the artists who have gone before us to make art an important part of the life of our community.

Cheers and Best Wishes -

Frank W. Tencza, President

Board of Directors:	
President.....	Frank Tencza
Vice President.....	Open
Treasurer.....	Natalie Long
Secretary.....	Fran Selva
Committees	
Membership.....	Caryl MacLeod
Plein Aire	Caryl MacLeod
Publicity, Programming	Joyce Emerle
Hanging, Programming, Name	
Tags.....	Angela Egerton
Communications & Web	Lucy Peltier
Newsletter.....	Sherri Montagna

We now have a website! The address is www.wilbrahamartleague.org. Keep watching the website for updates on the league. We have member news, a calendar, and exhibit info. We also have a list of artists. Each artist's name can be a link to his/her individual page with an artist's profile, email address, website address, and/or a small sample of their work (up to 3 digital photos no larger than 400 X 400 pixels). Just send the info to Lucy, our website administrator, by emailing webmaster@wilbrahamartleague.org.

Entry information is available for
The Big E's Creative Arts exhibit
at www.thebige.com, 413-205-5015, or e-mail
creativearts@thebige.com. This is basically a craft show
but they are taking digital photography and Plein Aire.
They award ribbons and cash prizes in the New England
Center in September.

Fran Selva



Plein Air drawing and painting -

The art league has been painting outside at various locations in the area including Fountain Park at the Summer Concert series

Now that the weather is improving, it is time to go outdoors to paint. We will try to schedule one Plein Air adventure every week all summer. For each week, we need a captain in charge of keeping track of participants, knowing how to get to where we are going, and knowing if water and bathrooms are available. I suggest meeting at a central location and car pooling to our destinations. Please call me if you can take charge of one or our excursions at 596-3486..

Even though the June places appear here in type, these locations are not carved in stone. If we discover water and bathrooms are not available, we will change our plans. Those of you who want to participate in Plein Air will have to keep in touch by email or phone to be sure of the right location. The plans for the rest of the summer will be coming later in the summer. Plan to spend the mornings from 9:30 to 12:30 unless otherwise noted.

Supplies needed for Plein Air painting are: a chair, hat, sun block, bug repellent, and water in addition to your regular painting equipment.

For June 4, Wednesday: Hearse House and old Meeting House at Main Street and Mountain Road, Wilbraham. Water and bathrooms in Village Store and Café.
Meet there at 9:30 am

For June 11, Wednesday: Stanley Park rose gardens and old mill. Meet there at 10 am Westfield. A captain is needed as I have no idea where this is.

For June 20, Friday: Mt Holyoke College. Need a leader for this one. We can carpool From Crane Park. Meet at 10 am.

For June 26, Thursday, Hampden Nursery, Hampden, MA., Somers Road at East Longmeadow Street. Meet there at 10 am.

More instructions will be on email each week or in a letter. If you have any questions, please free to call me at 596-3486 or email me at harrycarylmac@aol.com and mention

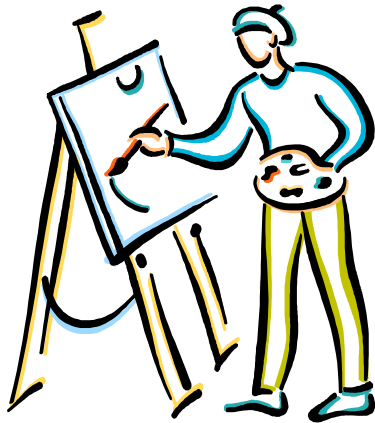
“Plein Air” in subject line. If I don’t recognize an emailer, I delete the message. If you type Plein Air, I will know it is about WAL.

In case of rain, go back to bed. Caryl MacLeod

Please notify Caryl if you are coming to any of these sessions.

We will notify you if the date, time or place is changed Caryl's e-mail: harrycarylmac@aol.com or phone: 596-3486.

Pack up your stuff and join us!!!



Wilbraham Art League General Meetings

Second Tuesday of the month

June 10 Frank Tencza will present a demonstration of how he paints his beautiful sea and sky paintings. Be sure to attend!

July and August no meetings will take place. Have a nice summer.

September – open if you would like to demonstrate an artistic talent, please contact an officer

Wilbraham Nature & Cultural Center Summer Concert Series 2008

Fountain Park, Tinkham Road, Wilbraham

Opportunities to Show and Sell your art this summer

EVERY THURSDAY NIGHT IN JULY 6:30 – 8:30

CONCERT DATES

July 3rd - Pops in the Park - Post Road Orchestra sponsored by Rotary Club of Hampden/Wilbraham

July 10th – Rick Larrimore & Blonds Have More Fun “The Ultimate” Rod Steward Tribute Band - sponsored by Scantic Valley YMCA/Post Office Park

July 17th - Changes in Latitude – Jimmy Buffet Tribute Band sponsored by Monson Savings Bank

July 24th – Jovi – Bon Jovi Tribute Band sponsored by LUSO Federal Credit Union

July 31st - Jimmy Mazz crooning Las Vegas Style sponsored by Country Bank for Savings

Artist Lessons

Vicky Fritz – Wilbraham 596-4062
Elizabeth Ann Koscher – Ludlow 583-6800
Joyce Emerle – Hampden 596-2032
Deborah Padden – Monson 203-6343
Fran Selva – basket weaving – Wilbraham 596-8668

Wilbraham Library Shows

June Teen Artists
July Frank D'Agostino
August Hampden Art League
September Joyce Emerle
October Marcia Soja
November Frank Tencza
December Natalie Long

Baked goods are needed for our monthly meetings and the board is asking members to sign up and be responsible for baking for one meeting per calendar year. Art League Members are asked to sign up at the next meeting. A few members can share baking responsibilities for a meeting so there is a variety. Thank you.

To copyright your artwork and protect it from being copied in an unauthorized manner always: Sign your name; make the copyright mark – the c in a circle; write the year that the artwork is completed; and then write your name. A clear coat of varnish or protectant makes it permanent. This can be done in permanent marker or paint.



Happy Spring and Summer!
Sherri Montagna, Newsletter